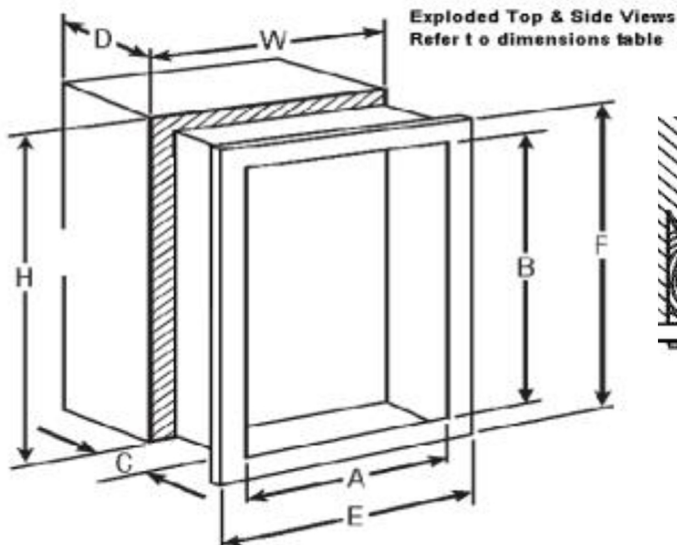
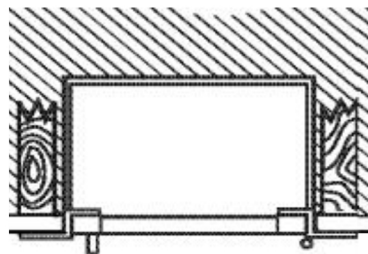


# FX2 - RECESSED STAINLESS STEEL FLAT TRIM SUBMITTAL : DIMENSIONS

| DOOR SERIES # | Tub I.D. |        |   | Frame O.D. |        | Wall Opening |         |         |
|---------------|----------|--------|---|------------|--------|--------------|---------|---------|
|               | A        | B      | C | E          | F      | W            | H       | D       |
| 6035          | 24       | 30     | 6 | 27 3/8     | 33 3/8 | 26 5/16      | 32 5/16 | 6 15/16 |
| 6135          | 24       | 30     | 8 | 27 3/8     | 33 3/8 | 26 5/16      | 32 5/16 | 8 15/16 |
| 6235          | 24       | 34 3/4 | 6 | 27 3/8     | 38 1/8 | 26 5/16      | 37 1/16 | 6 15/16 |
| 6435          | 24       | 34 3/4 | 8 | 27 3/8     | 38 1/8 | 26 5/16      | 37 1/16 | 8 15/16 |
| 6635          | 24       | 38 3/4 | 8 | 27 3/8     | 42 1/8 | 26 5/16      | 41 1/16 | 8 15/16 |
| 6335          | 30       | 30     | 8 | 33 3/8     | 33 3/8 | 32 5/16      | 32 5/16 | 8 15/16 |
| 6535          | 32 3/4   | 34 3/4 | 8 | 36 1/8     | 38 1/8 | 35 1/16      | 37 1/16 | 8 15/16 |
| 7235          | 32 3/4   | 38 3/4 | 8 | 36 1/8     | 42 1/8 | 35 1/16      | 41 1/16 | 8 15/16 |



## Top View



**Knockouts are not provided on Fire-Rated Cabinets**